

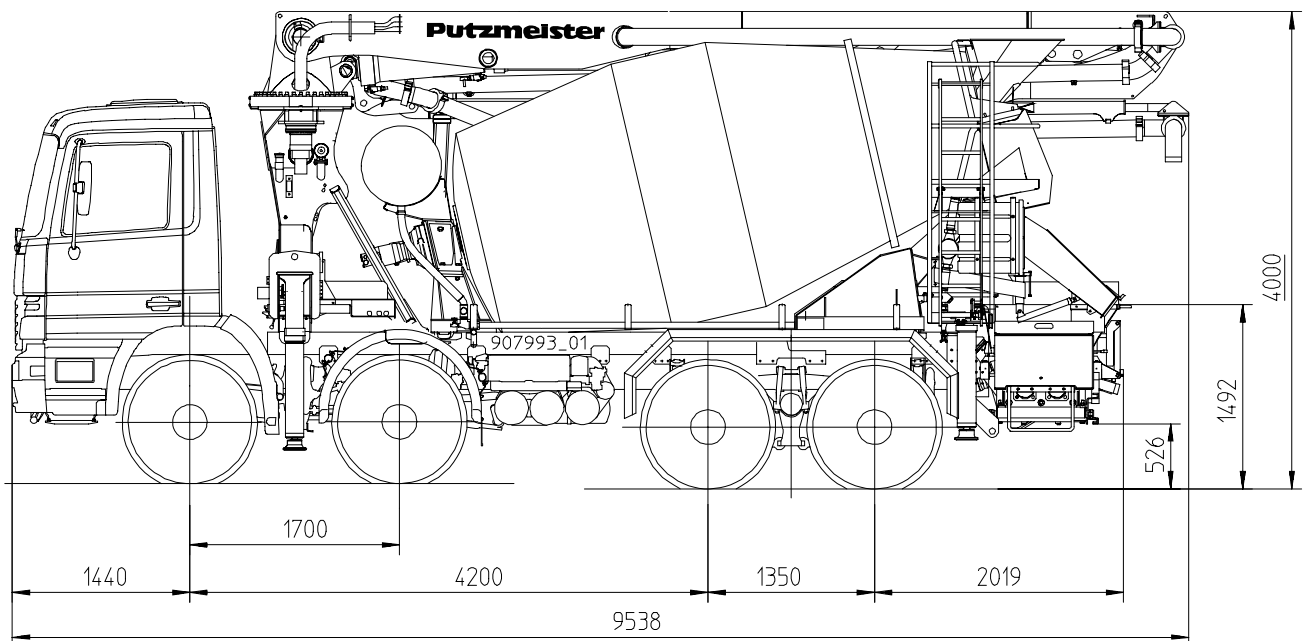
PUMI[®]

24.67 CS

Truck-mounted concrete pump with mixer

CS transfer tube system

MN 101270.001



Note: Standard version. Dimensions and weights depend on boom, mixer and chassis.
Dimensions in mm, MB-Actros 3240B as example

Technical data

| Boom | | TMM 24 | |
|------------------|-------|----------------|------|
| Reach height | m | | 23.8 |
| Horizontal reach | gross | m | 20.0 |
| | net | m | 17.6 |
| Reach depth max. | m | | 12.4 |
| Unfolding height | m | | 6.9 |
| End hose length | m | | 3 |
| Number of arms | | | 3 |
| Folding system | | Z fold (Z) | |
| Delivery line | | DN 125 – 5 ½ “ | |

| Pump | | TMP 60 CS | |
|-------------------|-------------------|-----------|-----|
| Output | m ³ /h | | 56 |
| Delivery pressure | bar | | 57 |
| Delivery cylinder | ∅ mm | | 230 |
| Stroke | mm | | 700 |

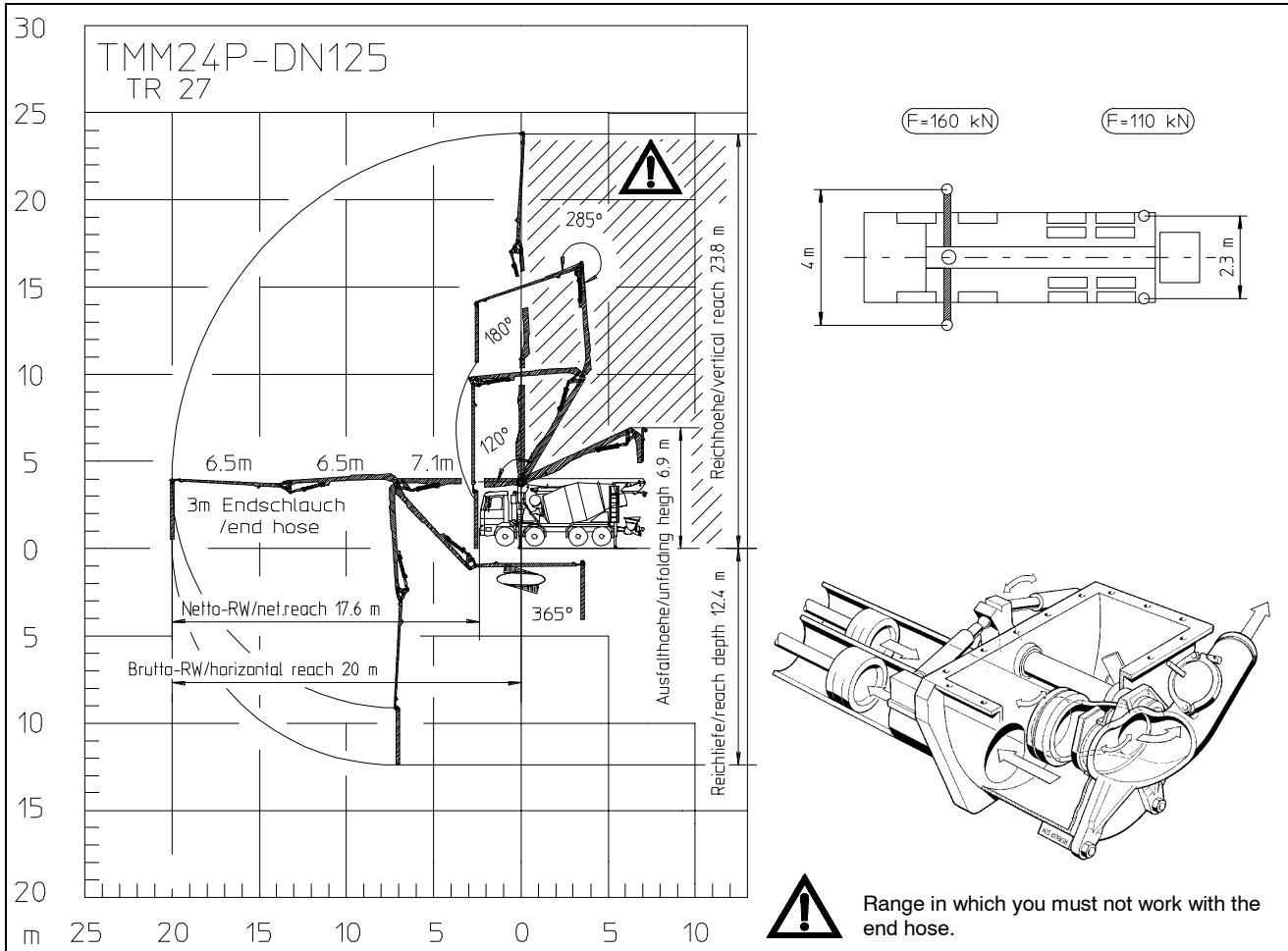
| Truck mixer | | HTM 704 P | |
|-------------------------|----------------|-----------|------|
| Nominal capacity | m ³ | | 7 |
| Total capacity | m ³ | | 11.5 |
| Filling ratio | % | | 63 |
| Power consumption | kW | | 52 |
| Drum speed | rpm | | 0-14 |
| Pressure tank for water | l | | 650 |

Maximum outputs of 56 m³/h and maximum concrete pressures of 57 bar may be achieved, depending on the equipment of the machine.

It is not possible to achieve maximum outputs and maximum concrete pressures simultaneously.

All data maximum theoretical.

Reach information diagram, Support, Transfer tube



Delivery scope

Support

- hydraulic telescopic
- support legs rear T 0
- support legs T 4.0
- support plates 4x in 2 magazines

Illumination

- hand working search light 1 piece
- side marker lamps

Extras

- operating manuals 2x cert. and spare part lists
- painting:
mixer MB 1227 chrome yellow
pump MB 1227 chrome yellow
arm assembly RAL 3020 signalred
- set of tools

Remote control

- radio remote control fully prop.
- remote control CPC with 25 m cable

Delivery line

- concrete line DN 125 5.5" 133x4
- end hose 3.0 m DN 125 5.5"

Boom

- boom pedestal TR 27

Mixing drum

- chute adjustment hydraulic mechanically
- chute extension
- ladder, telescopic
- mixer discharge automatically
- pressure tank for water 650 l
- truck mixer Liebherr HTM 704 P, 7 cbm
- water tap under water tank
- wear plate on inlet hopper
- wear plate on discharge hopper
- wear plate on discharge chute

Cleaning

- high pressure water pump 100bar with running dry connection
- cleaning hose with nozzle

- bracket for hammer and cleaning brush
- bracket for water hose

Safety

- agitator safety switch off
- emergency shut down

Stowage compartment

- hose bracket for 6x DN 65, 5m for 4 axle
- tool box plastic

Hopper

- central lubrication hopper by hand squeeze
- concrete hopper with agitator
- rubber collar

Please see quotation for exact delivery scope.

Optional extras

On request